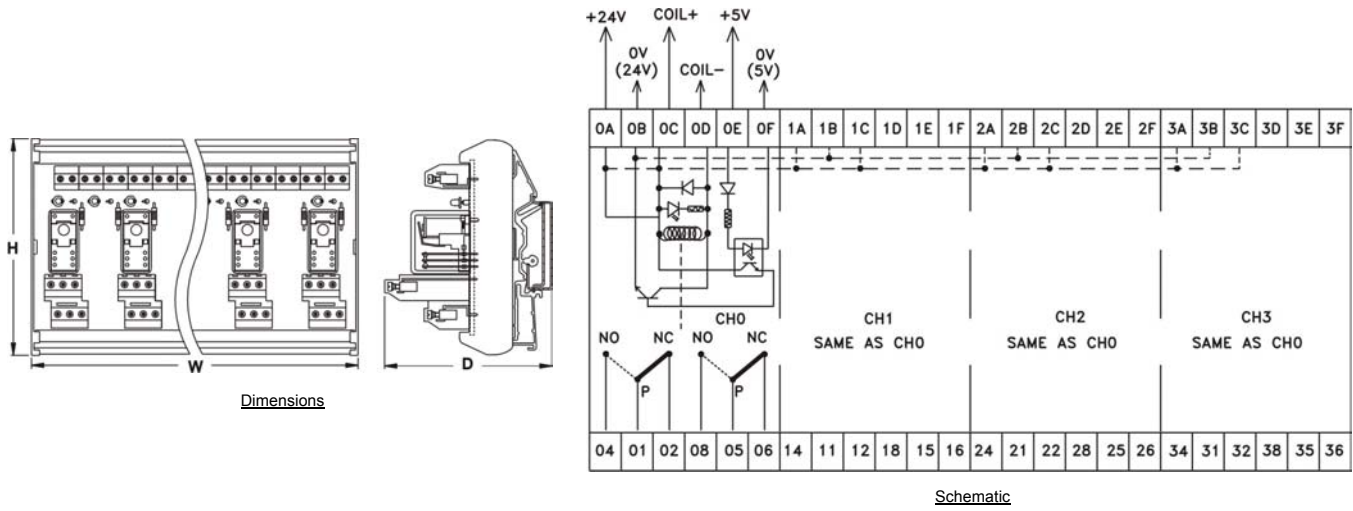


## 2 C/O Relay Module With OPTO INPUT



<b>FEATURES</b>	<ul style="list-style-type: none"> <li>LED &amp; Free wheeling diode across coil</li> <li>Optical isolation between control input and coil</li> </ul>	<ul style="list-style-type: none"> <li>Direct coil operation</li> <li>Low current control input</li> </ul>					
<b>CONNECTION DIAGRAM</b>	<div style="display: flex; justify-content: space-around;"> <div style="text-align: center;"> <p>1) Direct Coil Operation (Typical)</p> </div> <div style="text-align: center;"> <p>2) Coil Operation through Opto (Typical)</p> </div> </div>						
<b>CONTACT CONFIGURATION</b>	2C/O						
<b>NO. OF CHANNELS</b>	4						
<b>OPTO INPUT</b>	5VDC / 12VDC / 24VDC ( 10mA per channel )						
<b>RELAY</b>	<b>AUX. (COIL) VOLTAGE</b>	12VDC	24VDC				
	<b>MUST OPERATE VOLTAGE</b>	9.6VDC	19.2VDC				
	<b>MUST RELEASE VOLTAGE</b>	2.4VDC	4.8VDC				
	<b>MAX. COIL VOLTAGE</b>	13.2VDC	26.4VDC				
	<b>COIL CURRENT PER CHANNEL<sup>(1)</sup></b>	50mA	25mA				
	<b>OPERATE (SET) TIME</b>	15ms max.	<b>RELEASE (RESET) TIME</b>	20ms max.			
	<b>ENDURANCE</b>	Mechanical : 20,000,000 operations min. (at 1,800 operations/hr) Electrical : 100,000 operations min. (at 1,800 operations/hr under rated load)					
<b>MAX. OPERATING FREQUENCY</b>	Mechanical : 18,000 operations/hr Electrical : 1,800 operations/hr						
<b>DIELECTRIC STRENGTH</b>	<ol style="list-style-type: none"> <li>1. Opto input to Auxiliary supply : 500VAC , 50/60 Hz for 1 minute</li> <li>2. Opto input to contacts : 1.5KVAC , 50/60 Hz for 1 minute</li> <li>3. Coil to coil (when isolated) : 100VAC , 50/60 Hz for 1 minute</li> <li>4. Coil to contact : 1.5KVAC , 50/60 Hz for 1 minute</li> <li>5. Contacts of different polarity : 1KVAC , 50/60 Hz for 1 minute</li> <li>6. Contacts of same polarity : 1KVAC , 50/60 Hz for 1 minute</li> <li>7. Contacts - channel to channel : 1.5KVC , 50/60 Hz for 1 minute</li> </ol>						
<b>CONTACT RATING</b>	<b>RELAY</b>	5A@28VDC/230VAC	<b>ON BOARD</b>	5A@28VDC/230VAC			
<b>OPERATING AMBIENT</b>	0~55°C, 85% RH						
<b>STORAGE AMBIENT</b>	-20°C to 85°C						
<b>TERMINATIONS</b>	<b>COIL TERMINATION</b>	Screw type, for 2.5mm sq. wire	<b>CONTACT TERMINATION</b>	Screw type, for 2.5mm sq. wire			
<b>MOUNTING</b>	35 mm DIN rail						
<b>ORDERING INFORMATION</b>	<b>AS720, -5V, -24V, -OM</b>						
	<b>NO. OF RELAYS</b>	<b>DESIGN NO.</b>	<b>OPTO INPUT</b>	<b>RELAY COIL VOLTAGE</b>	<b>RELAY MAKE</b>	<b>DIMENSIONS W x H x D (mm)</b>	<b>WEIGHT (MAX)</b>
4	AS720	5V: 5VDC 12V: 12VDC 24V: 24VDC	12V: 12VDC 24V: 24VDC	OM : OMRON G2R : OEN 58DP	137 x 80 x 70	330 grams	
Note : 1. Current including LED current.							