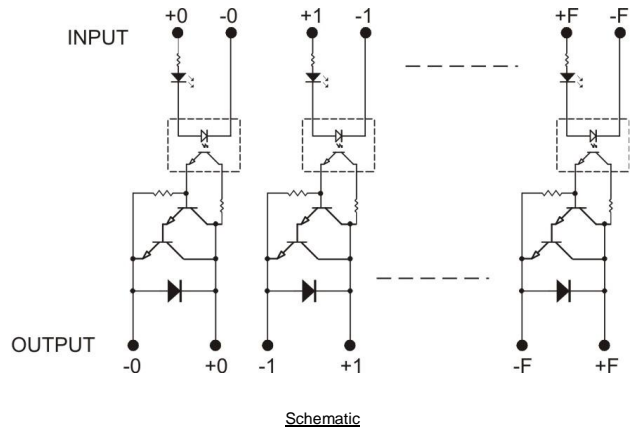
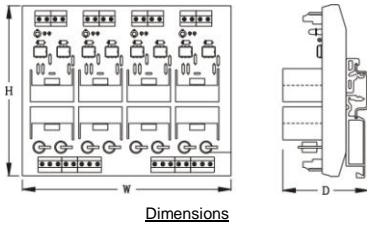
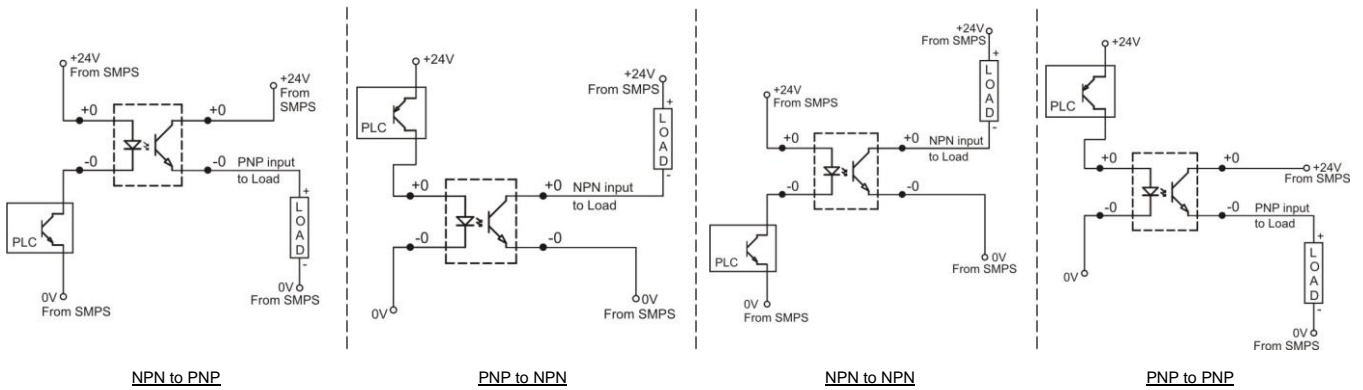


## SOLID STATE INTERFACE MODULE WITH OUTPUT : 24V, 2A



**Typical Connections :** For Resistive Load only [ Not recommended for Inductive load. Use AS771 to AS775 (non-isolated) for inductive load ]



<b>FEATURES</b>	<ul style="list-style-type: none"> <li>Optical Isolation between Input &amp; Output</li> <li>Low Input Current</li> <li>Negligible switching delay</li> <li>Can be used as NPN to PNP Converter or vice versa</li> </ul>				
<b>NO. OF CHANNELS</b>	2, 4, 6, 8, 12, 16				
<b>INPUT</b>	<b>NOMINAL INPUT VOLTAGE</b>	5VDC	12VDC	15VDC	24VDC
	<b>MUST - ON VOLTAGE</b>	4.5VDC	10.8VDC	13.5VDC	21.6VDC
	<b>MUST - OFF VOLTAGE</b>	1.0VDC	3.3VDC	3.3VDC	7.5VDC
	<b>MAX. INPUT VOLTAGE</b>	5.5VDC	13.2VDC	16.5VDC	26.4VDC
	<b>INPUT CURRENT PER CHANNEL<sup>(1)</sup></b>	< 15mA			
	<b>MAX. OPERATING FREQUENCY</b>	10KHz			
<b>OUTPUT</b>	<b>RATING</b>	24VDC, 2A Resistive only [ Not recommended for Inductive load. Use AS771 to AS775 (non-isolated) for inductive load ]			
	<b>OFF STATE LEAKAGE CURRENT</b>	< 20µA			
<b>DIELECTRIC STRENGTH</b>	1. Inputs - channel to channel (when isolated) : 100VAC, 50/60 Hz for 1 minute 2. Input to Output : Optical - 500VAC, 50/60 Hz for 1 minute 3. Outputs - channel to channel : 100VAC, 50/60 Hz for 1 minute				
<b>OPERATING AMBIENT</b>	0~55°C, 85% RH				
<b>STORAGE AMBIENT</b>	-20°C to 85°C				
<b>TERMINATIONS</b>	<b>INPUT SIDE</b>	Screw type, for 2.5mm sq. wire			
	<b>OUTPUT SIDE</b>	Screw type, for 2.5mm sq. wire			
<b>MOUNTING</b>	35 mm DIN rail				
<b>ORDERING INFORMATION</b>	AS785-24V-24V				
	<b>NO. OF CHANNELS</b>	<b>DESIGN NO.</b>	<b>INPUT VOLTAGE</b>	<b>OUTPUT VOLTAGE</b>	<b>DIMENSIONS W x H x D (mm)</b>
	2	AS782	5V : 5VDC 12V : 12VDC 15V : 15VDC 24V : 24VDC	24VDC, 2A	50 x 115 x 70
	4	AS783			70 x 115 x 70
	6	AS784			92 x 115 x 70
	8	AS785			115 x 115 x 70
	12	AS786			170 x 115 x 70
16	AS787	204 x 115 x 70			
<b>WEIGHT (MAX)</b>					
90 grams					
150 grams					
200 grams					
275 grams					
390 grams					
500 grams					

Note : 1. Current including LED current