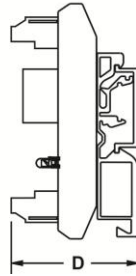
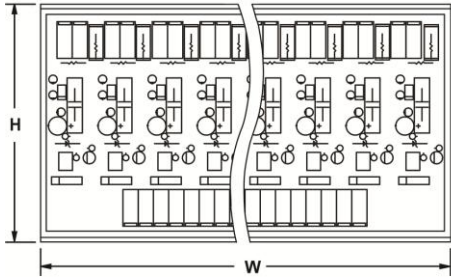
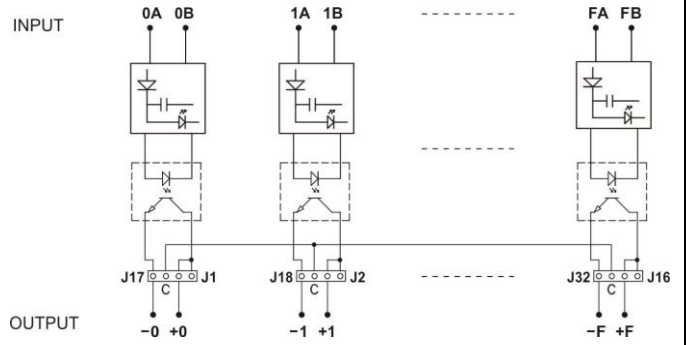


## OPTO INTERFACE MODULE



Dimensions

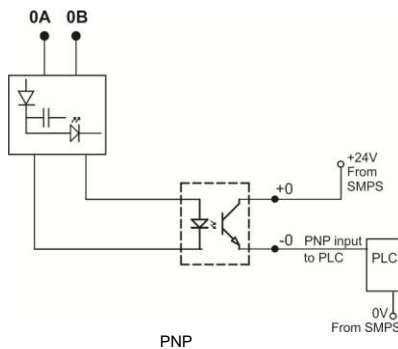


Schematic

**Note :** Default output jumper setting is isolated  
 OUTPUT Looping : +Ve Common – Place jumpers J1 to J16  
 -Ve Common – Place jumpers J17 to J32

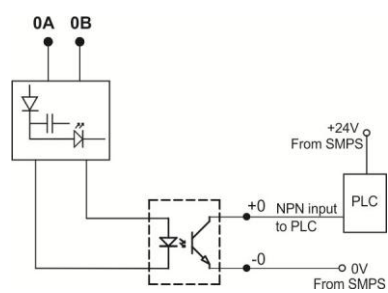
**Typical Connections :**

**AC I/P (230V/110V)**



PNP

**AC I/P (230V/110V)**



NPN

<b>FEATURES</b>	<ul style="list-style-type: none"> <li>Optical Isolation between Input &amp; Output</li> <li>Low Input Current</li> <li>Negligible switching delay</li> </ul>		
<b>NO. OF CHANNELS</b>	2, 4, 6, 8, 16		
<b>INPUT</b>	<b>INPUT VOLTAGE</b>	110VAC +/-10%	230VAC +/-10%
	<b>INPUT CURRENT PER CHANNEL<sup>(1)</sup></b>	< 15mA	
<b>OUTPUT</b>	<b>RATING</b>	5V – 30VDC, 15mA	
	<b>OFF STATE LEAKAGE CURRENT</b>	< 20µA	
<b>DIELECTRIC STRENGTH</b>	1. Inputs - Channel to channel (when isolated) : 100VAC, 50/60 Hz for 1 minute 2. Input - Output : Optical - 500VAC, 50/60 Hz for 1 minute 3. Outputs - Channel to channel (when isolated) : 100VAC, 50/60 Hz for 1 minute		
<b>OPERATING AMBIENT</b>	0-55°C, 85% RH		
<b>STORAGE AMBIENT</b>	-20°C to 85°C		
<b>TERMINATIONS</b>	<b>INPUT SIDE</b>	Screw type, for 2.5mm sq. wire	
	<b>OUTPUT SIDE</b>	Screw type, for 2.5mm sq. wire	
<b>MOUNTING</b>	35 mm DIN rail		

<b>ORDERING INFORMATION</b>						
	<b>NO. OF CHANNELS</b>	<b>DESIGN NO.</b>	<b>INPUT VOLTAGE</b>	<b>OUTPUT VOLTAGE</b>	<b>DIMENSIONS W x H x D (mm)</b>	<b>WEIGHT (MAX)</b>
	2	AS852	110VAC 230VAC	5V – 30VDC (15mA)	24 x 80 x 70	50 grams
	4	AS853			46 x 80 x 70	90 grams
	6	AS854			68 x 80 x 70	130 grams
	8	AS855			91 x 80 x 70	150 grams
16	AS857	182 x 80 x 70			280 grams	

Note : 1. Current including LED current.